



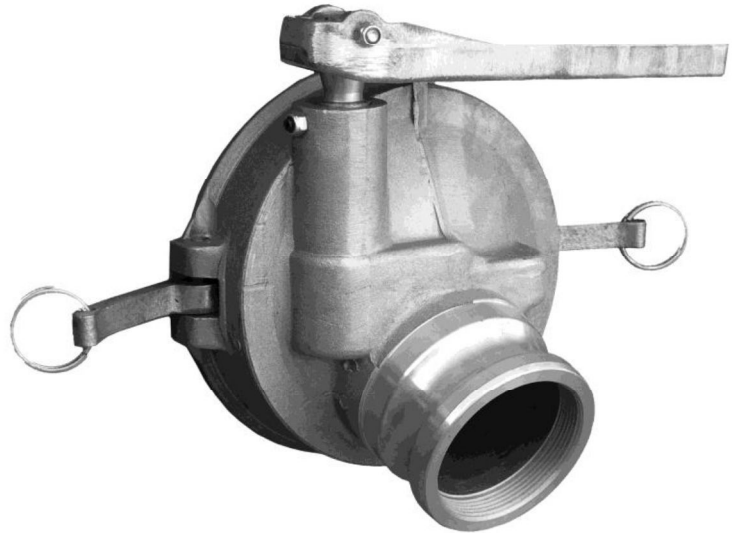
K3

API Gravity Unloading Coupler with Handle

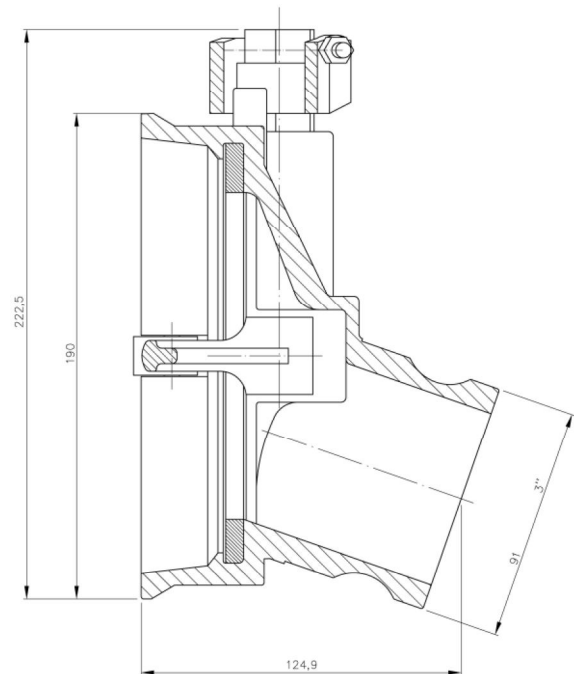
DESIGN CHARACTERISTICS

Durable construction and high flow design make this coupler the ideal choice for gravity unloading where API 1004 adaptors are present. It comes with actuating handle as long as with cock for sample taking.

- Robust Construction of the shell made of aluminium alloy.
- Designed in accordance to EN 13315:2002 European standard in coupler design and test procedures.
- Brass Cams reduce wear on API nose.
- Durable actuating mechanism with stainless steel components eliminates corrosion.
- Cock for sample taking.
- Couples with all API 1004 adaptors.



Overall Dimensions



TECHNICAL DATA

Test Pressure

: 75kPa

Coupler Weight

: 2.7 kg