

Issue Date: 1 March 2019



QINGDAO ALPTEC SAFETY EQUIPMENT CO.,LTD.



Add: No.13 Hancheng Road, Qingdao Free Trade Zone,
Shandong Province, 266555. P.R. China
Tel: +86 (0)5328689 4009
E-mail: catherine@alptec.com
www.alptec.com

Safety Expert
for Oil Storage & Transportation
Leading Manufacturer
of Overfill Protection & Grounding Systems



The Leading Manufacturer of Overfill Protection & Grounding Systems in China

Established in 1996, Qingdao Alptec Safety Equipment Co., Ltd specialises in the design, manufacture, and supply of high-quality Overfill Protection as well as Static Grounding Systems, Earthing Clamps, Reels and accessories for the chemical, petrochemical, oil and gas and process industries that transport, store, transfer and use flammable liquids, solvents or combustible liquids in hazardous areas.

Alptec is Sinopec and PetroChina's preferred brand and we have secured more than 50% of the market share in China. Internationally we began exporting in 2006 to Germany, Spain, USA, Canada, Australia&New Zealand, Korea, Singapore, Thailand, Vietnam, Mexico, Brazil, South-Africa, India, and many other countries.

We aspire to be your trusted supplier.

Safety Expert for Oil Storage & Transportation

CONTENTS

- 01~07 Static Grounding Devices**
 - 01 Static Grounding Monitoring Systems
 - 03 Static Grounding Reels
 - 04 Self-testing Grounding Clamp with Visible & Audible Alarms
 - 05 Grounding Clamps
 - 07 Personal Electrostatic Eliminating Alarm
- 08 Leakage Detector**
- 09~10 Overfill Protection Devices**
 - 09 High Level Alarms
 - 10 Overfill Protection System
- 11~16 Overfill Protection & Grounding Systems**
 - 11 For Top Loading
 - 13 For Bottom Loading
- 17~18 Retractable Grounding Reel For Floating Roof Storage Tanks**
- 19 Sister Companies**



Static Grounding Devices ➤

Static Grounding Monitoring Systems

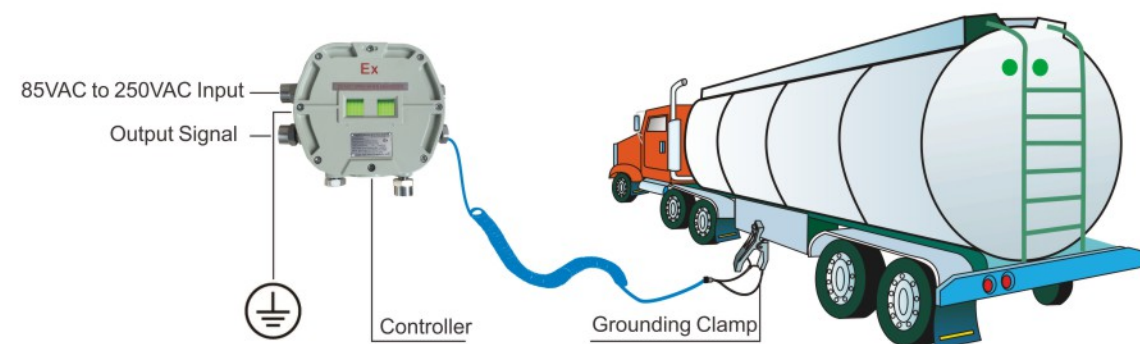
Model: SLA-S-Y

The "Static Grounding Monitoring System" functions as a part of an Overfill Protection & Earthing System. These provide a visual green light indicating a confirmed grounding condition of road tanker vehicles during the transfer of flammable and combustible materials. A red light indicates the absence of a dependable grounding. An interlock circuit inside the control panel will prevent pumps and equipment from starting until a satisfactory ground is established. The interlock circuit will also shut off pumps and equipment if the ground is lost during the pumping operation.



➤ Specifications

| | |
|---------------------------------|--|
| Input Power | 85VAC to 250VAC 50Hz |
| Input Current | <60mA |
| Output Signal | On-off signal |
| Monitoring Set Point | 10 ohms |
| Alarm | Visible alarm |
| Spiral Cable | Extendable to 5.3m (17.4ft.) |
| Output Safety Parameters | Um:250VAC,Uo:14.28VDC,Io:27.2mA,Po:97mW,Co:4.17µF,Lo:192mH |
| Indicator | Lamp (Green=satisfactory ground and red=no ground) |
| Operation Temperature | -20°C to +55°C (-4°F to +131°F) |
| Eu-Type Examine Certificate No. | Presafe 16 ATEX 8909X |
| QAN Certificate No. | Presafe 16 ATEX 7744Q |
| Standard | EN 60079-0,EN60079-1,EN60079-11 |
| Applicable Directive | 2014/34/EU |



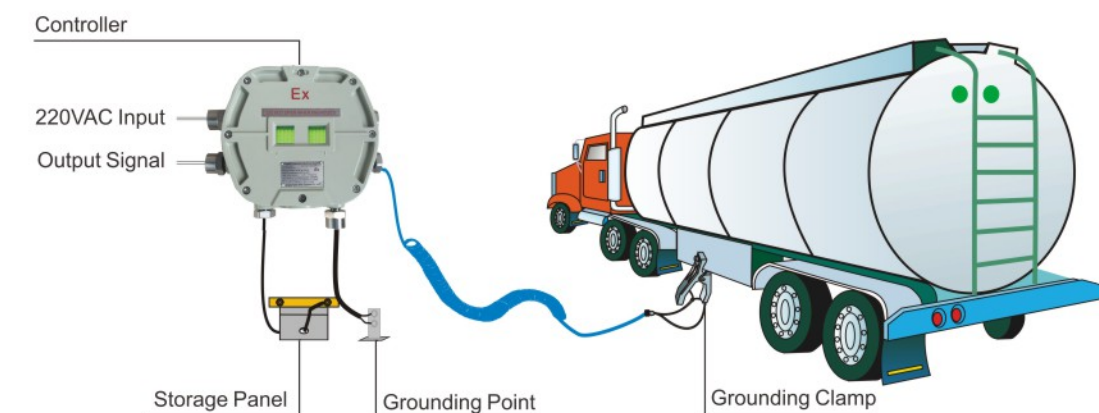
Model: SLA-S-Y

During fuelling, loading and unloading operations, the vehicles should always be grounded. The "Static Grounding Monitoring System" will automatically shut off the loading and unloading operations if the grounding is broken at any time during the operation.



➤ Specifications

| | |
|-----------------------|--|
| Input Power | 220 VAC or 24VDC |
| Input Current | <60mA |
| Output Signal | On-off signal |
| Monitoring Set Point | 10 ohms |
| Alarms | Audible and visible alarms |
| Spiral Cable | Extendable to 5.3m (17.4ft.) |
| Indicator | Lamp (Green=satisfactory ground and red=no ground) |
| Operation Temperature | -40°C to +60°C (-40°F to +140°F) |
| Alarm Volume | >90dB |
| Certification | ExdialIBT4 Gc |

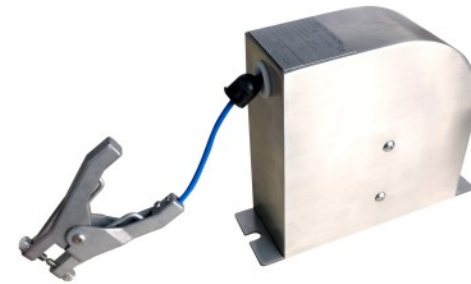


Static Grounding Reels

Model: S-RL

The ATEX approved "Static Grounding Reels" have a self-retracting cable drum and an instant locking mechanism to prevent the cable from becoming tangled.

The Standard S-RL model includes a 7m (23ft.) polyurethane jacketed stainless steel cable. An ATEX approved, heavy duty grounding clamp (with replaceable stainless steel tips) is connected to the cable for a solid connection to the grounding surface. S-RL Reels are also available with 15m (49ft.) and 20m (65ft.) cable lengths.



CE II 2G Ex h IIC T6 Gb

Features & Benefits

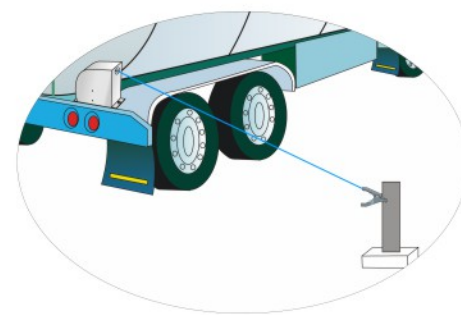
- Stainless steel housing and base plate.
- The sealed housing prevents the cable from being exposed to corrosive and harsh environments.
- The self-storing cable design prevents personnel from being exposed to trip hazards. The self-retracting cable mechanism keeps the cable stored in a safe, organized manner.
- An instant locking mechanism holds the cable at the desired extended length.
- Applicable Directive: 2014/34/EU

Static Grounding Reel with Alarm *Battery Operated*

Model: SA-YL

The model SA-YL includes all of the features included in our S-RL models with the following **special features**:

| | |
|----------------------|------------------------------------|
| Alarm | Audible alarm |
| Alarm Volume | >90dB (Alarm sounder 90dB at 30cm) |
| Monitoring Set Point | 60 ohms |
| Battery | Lithium battery (3.6V) |
| Clamp Cable Length | 7m (23ft.) |
| Certification | ExialICT4 Ga |



Self-testing Grounding Clamp with Visible & Audible Alarms

Battery Operated

The accumulation of static charges during the fuelling transfer process can lead to costly explosions, fire and personnel injury. The "Self-testing Grounding Clamp" with visible & audible alarms is designed to dissipate static charge accumulation and verify proper grounding. It is intrinsically safe and designed for use in hazardous locations.



Model: SA-YP (Mobile)

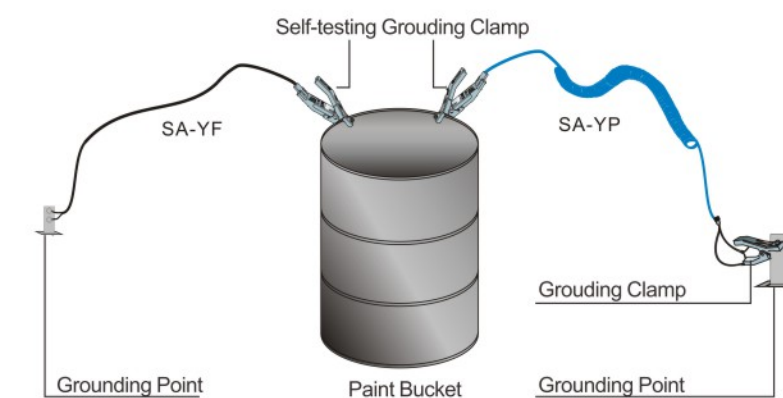
| | |
|--------------|------------------------------------|
| Cable length | 5m (16.4ft.) spiral cable |
| Clamp 1 | SA- Y (visible and audible alarms) |
| Clamp 2 | SC-02 |

Model: SA-YF (Fixed)



| | |
|--------------|------------------------------------|
| Cable Length | 5m (16.4ft.) |
| Clamp | SA- Y (visible and audible alarms) |
| Lug | 60A (SC35-10, Φ10MM) |

Features & Benefits

- Low energy consumption design makes battery replacement unnecessary during normal operation. Digitron resistance display.
- After 60 seconds of continuous alarm it will go to rest status and will return to normal in a closed circuit.
- The electrical circuitry is totally covered by epoxy resin, making it damp-proof, rust-proof, corrosion-proof and shock-proof.



Grounding Clamps

In order to dissipate the electrostatic charge from various equipment, we have a wide range of static grounding clamps with cables that are all ATEX approved, certification:   II 2 G T6

Model: SC-01

- Die-cast aluminum construction with 2 stainless steel points.
- Strong spring pressure allows the clamp to penetrate multiple layers of paint or corrosion build-up to ensure proper bonding.
- Suitable for grounding and bonding for a wide range of containers, drums and machinery.

Opening: 20 mm Size: 112mm X 80mm Weight: 140g



Model: SC-02

- Die-cast aluminum construction with 2 stainless steel points.
- The sensing clamp can be connected to an electronic apparatus via a two-core cable.
- Suitable for grounding and bonding a wide range of tanker trucks and railcars.

Opening: 28 mm Size: 160mm X 86mm Weight: 295g



Model: SC-03

- Die-cast aluminum construction with 3 stainless steel points.
- The sensing clamp can be connected to an electronic apparatus via a two-core cable.
- Suitable for grounding and bonding a wide range of tanker trucks and railcars.

Opening: 30 mm Size: 160mm X 86mm Weight: 300g



Model: SC-04

- Die-cast aluminum construction with brass jaws.
- Brass jaws are designed to allow proper contact onto unpainted surfaces, posts or thin materials.
- Suitable for grounding and bonding of refueling vehicles and aircraft.

Opening: 18 mm Size: 112mm X 80mm Weight: 160g



Model: SC-05

- 316L stainless steel construction with 3 stainless steel points.
- Ideal for use in the areas where high corrosion resistance is required.

Opening: 18mm Size: 160mm X 82mm Weight: 300g



Model: SC-06

- 316L stainless steel construction with 3 stainless steel points.
- Ideal for use in the areas where high corrosion resistance is required.

Opening: 28mm Size: 236mm X 93mm Weight: 510g



C Clamps

We make a series of stainless steel C clamps with the sizes from 3/4" to 1 1/2".

- Provide semi-permanent connections on flat materials.
- Can be produced to specific sizes.

| Model | Size | Range | Weight |
|-------|--------|-------------|--------|
| CC-01 | 3/4" | 1mm to 15mm | 114 g |
| CC-02 | 1 1/2" | 1mm to 33mm | 173 g |



Pipe Clamps

We make a series of bronze pipe clamps which can be adjusted from 1" to 3".

- The rugged design provides a positive connection to penetrate paint and rust.
- Equipotential connection for loading arms and pipes.
- Can be produced to specific sizes.

| Model | Size | Pipe Range | Weight |
|-------|--------|--------------|--------|
| PC-02 | 1" | 33mm to 35mm | 50 g |
| PC-03 | 1 1/2" | 47mm to 50mm | 150 g |
| PC-04 | 2" | 59mm to 62mm | 200 g |
| PC-05 | 2 1/2" | 75mm to 78mm | 260 g |
| PC-06 | 3" | 88mm to 92mm | 280 g |



Grounding Assemblies

SC-L1



1 SC-01 clamp with 4m of spiral cable & lug

SC-L2



2 SC-01 clamps with 4m of spiral cable

SC-L3



1 SC-01 clamp with 4m of spiral cable & 1" pipe clamp

SC-L4



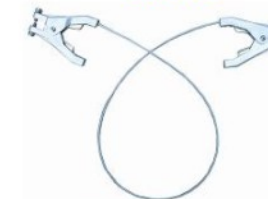
1 SC-01 clamp with 4m of spiral cable & 3/4" C clamp

SC-T1



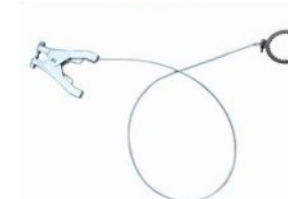
1 SC-01 clamp with 1m of stainless steel wire & lug

SC-T2



2 SC-01 clamps with 1m of stainless steel wire

SC-T3



1 SC-01 clamp with 1m of stainless steel wire & 1" pipe clamp

SC-T4



1 SC-01 clamp with 1m of stainless steel wire & 3/4" C clamp

Personal Electrostatic Eliminating Alarm

Red for Stop and Green for Go

Under certain conditions, a person's body can be electrostatically charged by friction and natural environmental conditions. The "Personal Electrostatic Eliminating Alarm" device is designed to prevent the accumulation and accidental discharge of static electricity from a person's body while providing audible and visible alarms.



Model: PS-Y

➤ Specifications

| | |
|----------------------------------|----------------|
| Monitoring Electrostatic Voltage | -15KV to +15KV |
| Alarm Voltage | >150V |
| Height | 1.1m (3.6ft.) |
| Certification | ExiIBT4 Gb |

➤ Features & Benefits

- Handle: Constructed of electrostatic conductive material.
- Static electricity from a person's body will be continuously discharged without any spark or discomfort.
- Provides constant monitoring with audible and visible alarms.



Model: PS-A2

The model PS-A2 includes all of the features included in our PS-Y models with the additional **special features**:

- Audible voice warning when people approaching.
- OLED Display indicates the resistance value.

Leakage Detector ➤

Model: UZK-SA-LD

Leakage Detectors are designed for detecting oil and water between two layers of double wall tanks and pipelines. Audible and visible alarms will be sent out once the sensors detect a leak.



Controller



Leak sensor for SF double wall tanks



Leak sensor for FF double wall tanks



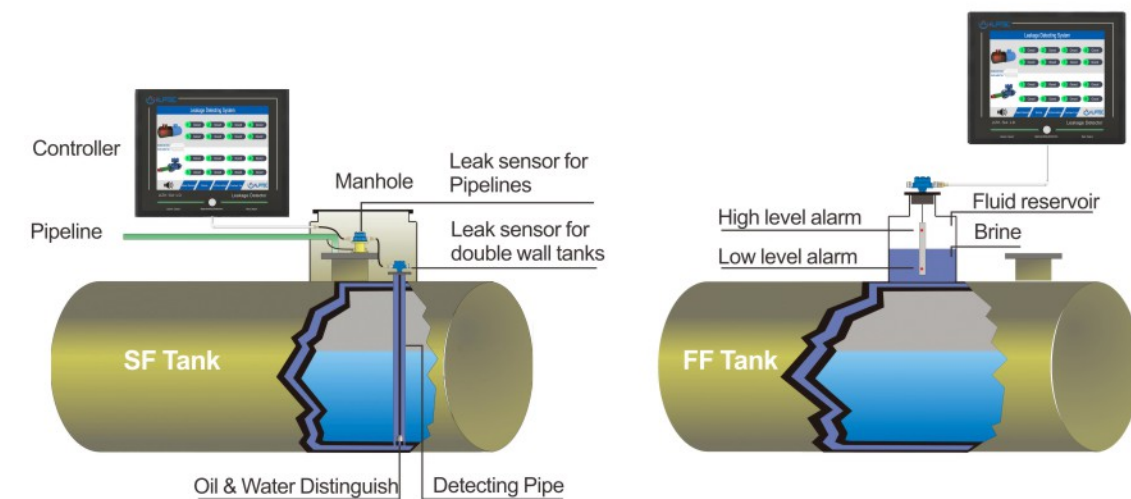
Leak sensor for Pipelines

➤ Specifications

| | |
|-----------------------|---|
| Detecting Accuracy | <3mm |
| Input Power | 220VAC±10% |
| Signal Output | One relay (normally open / normally closed) |
| Operation Temperature | -40°C to +60°C (-40°F to +140°F) |
| Certification | ExialIBT4 Ga |

➤ Features & Benefits

- Audible and visible alarms.
- Automatic self-check feature.
- A mute button will stop the sounder when necessary.
- Easy to mount and install.
- Oil and water distinguish.



Overfill Protection Devices ➤

ATEX & IECEX Approved High Level Alarms *Battery Operated*

Model: UZK-A

The “High Level Alarms” provide audible and visible alarms for monitoring levels of liquids. It can be directly mounted on a fuel tank to provide a warning of a full tank high level. Optionally the alarm panel may be remote mounted from the sensor. The powerful audible alarm can be heard over background sound, for example, pumping equipment. The “High Level Alarms” are weather proof and can be mounted in wet environments.



CE 2460

II1G Ex ia IIBT4Ga

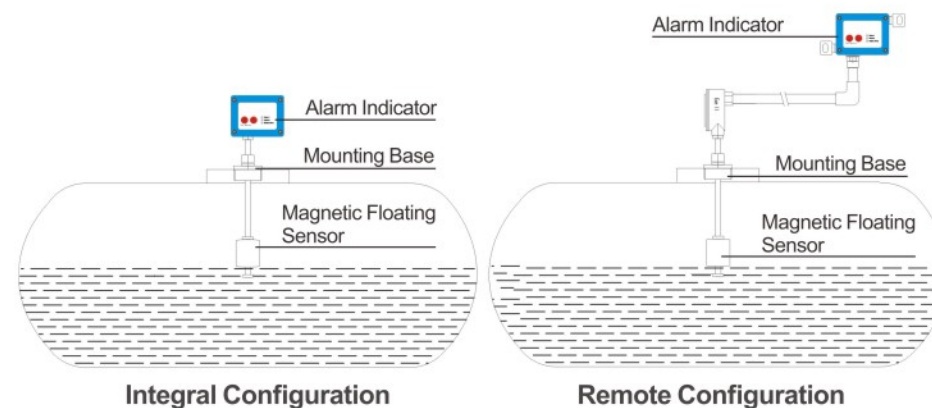


➤ Specifications

| | |
|-------------------------------------|----------------------------------|
| Battery | 6VDC (4XAAA) |
| Alarms | Audible and visible alarms |
| Alarm Volume | ≥110dB |
| Operation Temperature | -40°C to +60°C (-40°F to +140°F) |
| Sensor | Float sensor |
| EU-Type Examination Certificate No. | Presafe 18 ATEX 13423X |
| IEC Certificate No. | IECEX PRE 18.0084X |
| Applicable Directive | 2014/34/EU |

➤ Features & Benefits

- Low battery alarm.
- Adjustable sensor level.
- A standard 2 inch BSP fitting provided for mounting. Optional mounting fittings are available upon request.



➤ Specifications

| | |
|-----------------------|----------------------------------|
| Battery | 3VDC (2XAA) |
| Alarms | Audible and visible alarms |
| Alarm Volume | >90dB |
| Operation Temperature | -40°C to +60°C (-40°F to +140°F) |
| Sensor | Piezoelectric sensor |
| Certification | ExialIBT4 Ga |

➤ Features & Benefits

- Low battery alarm.
- Adjustable sensor level.
- It has a continuous self-check and alert feature to ensure the system is working properly.
- A standard 2 inch BSP fitting provided for mounting. Optional mounting fittings are available upon request.

Overfill Protection System

Model: SLA-S-Y

The “Overfill Protection Systems” are designed to detect a liquid point level signal from an overfill sensor. The system provides an automatic signal to the rack automation equipment to shut-off the flow of liquid, and warn of an impending overflow condition of a tank truck.

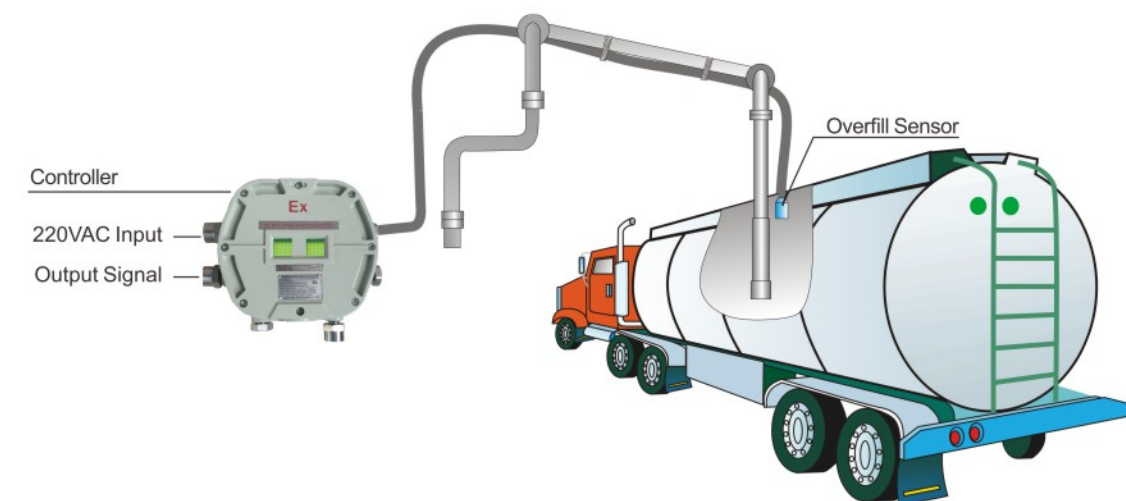


➤ Specifications

| | |
|-----------------------|----------------------------------|
| Input Power | 220VAC±10% |
| Input Current | <15mA |
| Output Signal | On-off signal |
| Sensor Cable Length | 8m (26ft.) |
| Operation Temperature | -40°C to +60°C (-40°F to +140°F) |
| Alarm Volume | >90dB |
| Certification | ExdialIBT4 Gc |

➤ Features & Benefits

- Audible and visible alarms.
- The overfill sensor has a continuous self-check and alert feature to ensure the system is working properly.



Overfill Protection & Grounding Systems ➤

The “Overfill Protection and Grounding Systems” are designed for top loading of road tankers, rail cars, etc. In the event of an overfill condition, the overfill sensors will send a signal through the output relay to the terminal automated loading system to shut down the loading operation. The systems provide overfill protection as well as grounding verification.

Model: SLA-S-IC For Top Loading

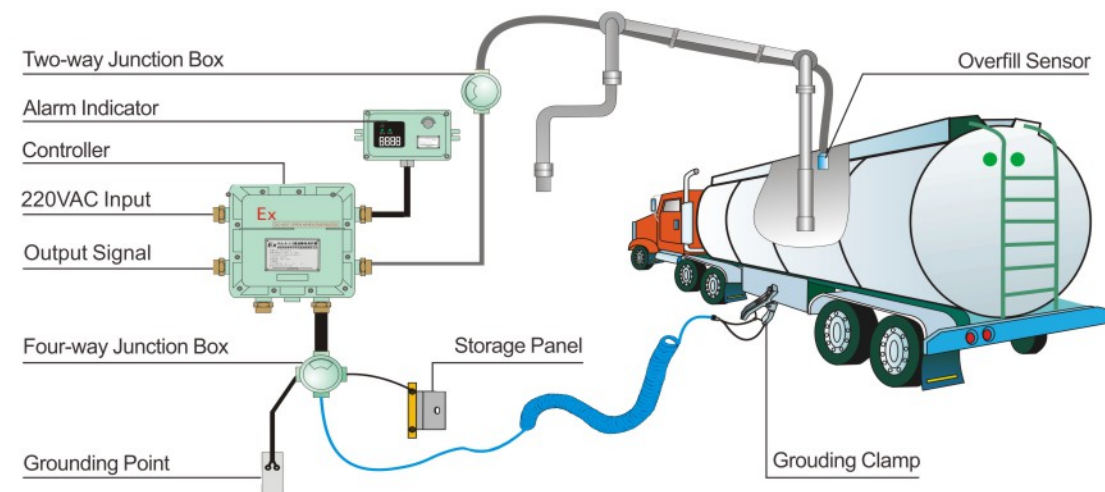


➤ Specifications

| | | | |
|----------------------|--------------------------|-----------------------|-----------------------------------|
| Input Power | 220VAC±10% | Spiral Cable | Extendable to 5.3 m (17.4ft.) |
| Input Current | <35mA | Operation Temperature | -40 °C to +60°C (-40°F to +140°F) |
| Monitoring Set Point | 10 ohms | Sensor Cable Length | 6m (20ft.) |
| Output Signal | 30V DC, 10A/250V AC, 10A | Alarm Volume | >90dB |
| Ingress Protection | IP65 | Certification | ExdialIBT6 Gc |

➤ Features & Benefits

- Audible and visible alarms.
- Upon the loss of a ground connection or an overfill condition, the system will send a signal to immediately shut off the loading operation.
- LED display provides the resistance value of the ground connection.
- The overfill sensor has a continuous self-check and alert feature to ensure the system is working properly.



Model: SLA-S-Y For Top Loading

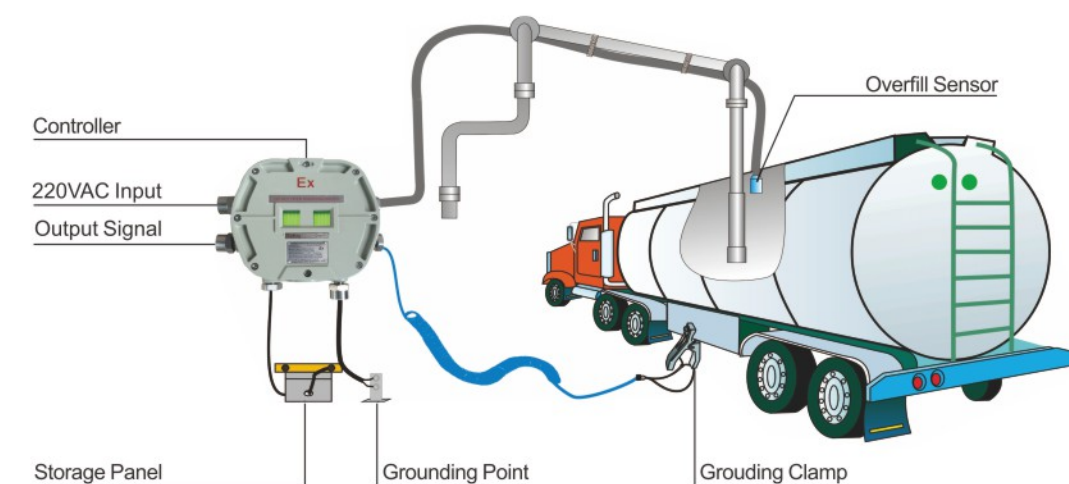


➤ Specifications

| | | | |
|----------------------|--------------------------|-----------------------|------------------------------------|
| Input Power | 220VAC±10% | Spiral Cable | Extendable to 5.3 m (17.4ft.) |
| Input current | <15mA | Sensor Cable Length | 6m (20ft.) |
| Monitoring Set Point | 10 ohms | Operation Temperature | -40 °C to +60 °C (-40°F to +140°F) |
| Output Signal | 30V DC, 10A/250V AC, 10A | Alarm Volume | >90dB |
| Ingress Protection | IP65 | Certification | ExdialIBT4 Gc |

➤ Features & Benefits

- Audible and visible alarms.
- Upon the loss of a ground connection or an overfill condition, the system will send a signal to immediately shut off the loading operation.
- The overfill sensor has a continuous self-check and alert feature to ensure the system is working properly.





The "Overfill Protection and Grounding Systems" are designed for bottom loading of road tankers, rail cars, etc. In the event of an overfill condition, the overfill sensors will send a signal through the output relay to the terminal automated loading system to shut down the loading operation. The systems provides overfill protection as well as grounding verification.

Model: SLA-S-IVB For Bottom Loading

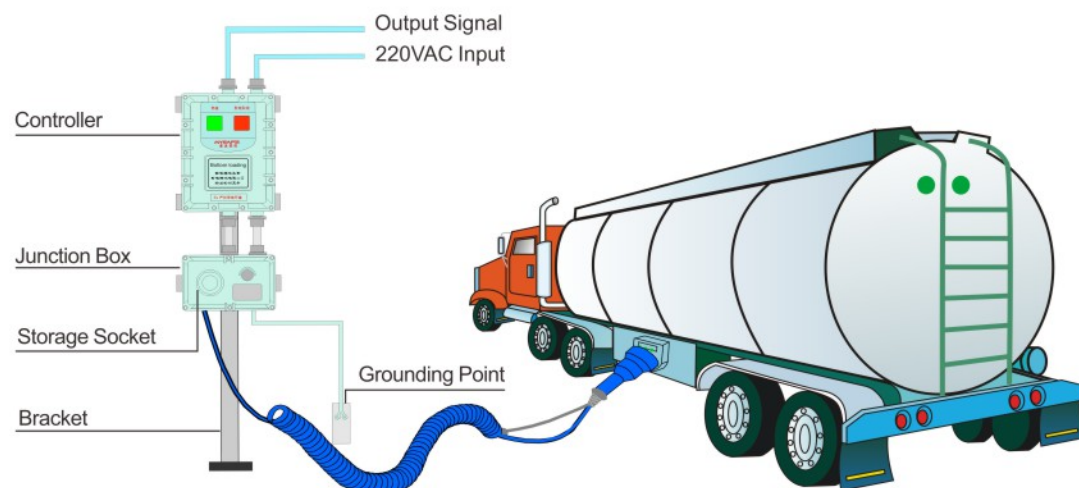


➤ Specifications

| | |
|-----------------------|-----------------------------------|
| Input Power | 220VAC±10% |
| Input Current | <50mA |
| Output Signal | 30VDC, 10A / 250V AC, 10A |
| Ingress Protection | IP65 |
| Spiral Cable | Extendable to 8m (26ft.) |
| Operation Temperature | -40°C to +60 °C (-40°F to +140°F) |
| Certification | ExdialIBT4 Gc |

➤ Features & Benefits

- Audible voice warning.
- LCD Display indicates the status of the system.
- Compatible with overfill sensors and sockets that meet API standards.
- Monitors up to 6 optic compartments.
- When the connector plug is stowed in the storage socket, the system will put out a homing signal to open or close an automatic gate.
- Easy to mount and install.



Model: SLA-S-IIC For Bottom Loading

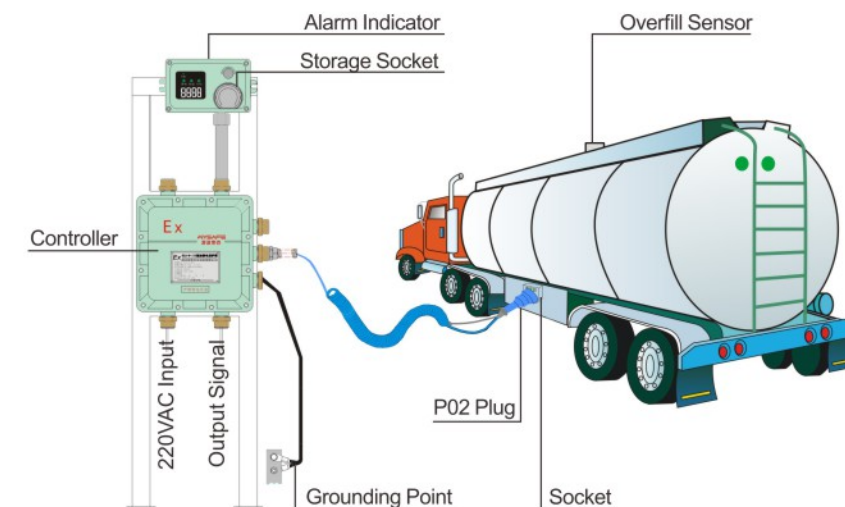


➤ Specifications

| | |
|-----------------------|------------------------------------|
| Input Power | 220VAC±10% |
| Input Current | <50mA |
| Monitoring Set Point | 10 ohms |
| Output Signal | 30V DC, 10A /250V AC, 10A |
| Ingress Protection | IP65 |
| Spiral Cable | Extendable to 8m (26ft.) |
| Operation Temperature | -40 °C to +60 °C (-40°F to +140°F) |
| Alarm Volume | >90dB |
| Certification | ExdialIBT6 Gc |

➤ Features & Benefits

- Audible and visible alarms.
- Compatible with overfill sensors and sockets that meet API standards.
- Monitors up to 6 five-wire optic sensors.
- LED display provides the resistance value of the ground connection.
- When the connector plug is stowed in the storage socket, the system will put out a homing signal to open or close an automatic gate.
- Easy to mount and install.





The ATEX approved “Overfill Protection and Earthing Systems” are designed for bottom loading of road tankers, rail cars, etc. In the event of an overfill condition, the overfill sensor will send a signal through the output relay to the terminal automated loading system to shut down the loading operation. The systems provide overfill protection as well as grounding verification.

Model: SLA-S-Y For Bottom Loading



CE 2460

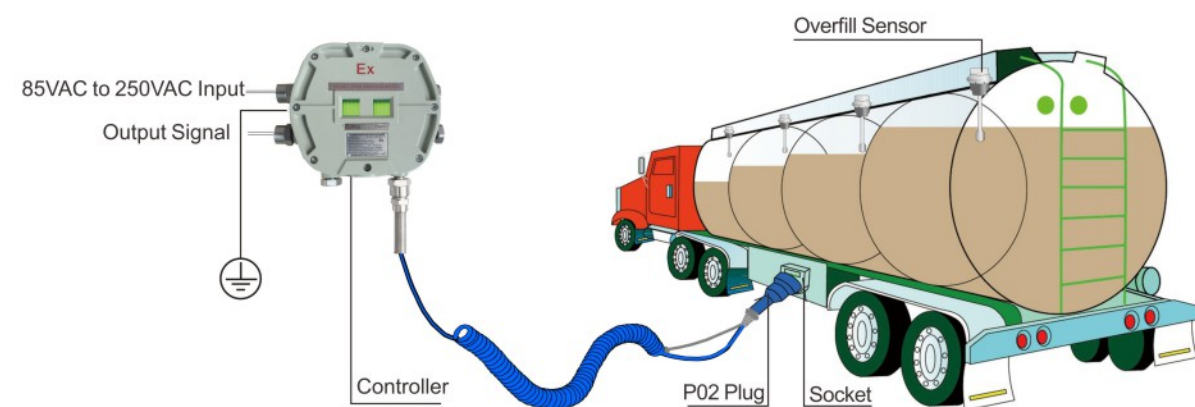
II 2(1) G Ex db ia [ia Ga] IIB T5 Gb

Specifications

| | |
|-------------------------------------|--|
| Input Power | 85VAC to 250VAC 50Hz |
| Input Current | <60mA |
| Alarm Type | Visible alarm |
| Spiral Cable | Extendable to 8m (26ft.) |
| Output Safety Parameters | Um:250VAC,Uo:21.42VDC,Io:149mA,Po:798mW,Co:1.19μF, Lo:6.4mH (for overfill sensor) |
| | Um:250VAC,Uo:14.28VDC,Io:96.2mA,Po:343mW,Co:4.28μF, Lo:15.4mH (for earthing sensor) |
| Operation Temperature | -20°C to +55°C (-4°F to +131°F) |
| Eu-Type Examination Certificate No. | Presafe 16 ATEX 8909X |
| QAN Certificate No. | Presafe 16 ATEX 7744Q |
| Applicable Directive | 2014/34/EU |

Features & Benefits

- Designed and manufactured according to API standards.
- Compatible with overfill sensors and sockets that meet API standards.
- Monitors up to 6 overfill sensors.



Overfill Sensors

Overfill sensors are designed to prevent overfill of liquid petroleum products.

Model: UZK-DM

Features & Benefits

- Meets API Recommended Practice.
- Interchangeable with optical sensors that meet API standards.
- Easy to adjust.
- Optical sensor.



Self-testing Socket & Grounding Bolt

Socket and grounding bolt are designed to connect the Overfill Protection & Grounding Systems to the tank truck.

Model: S02

Features & Benefits

- Checks the function of the overfill sensors and the earthing of the ground bolt. Performs the self-test of the overfill and electrostatic function without the connection of the associated apparatus.
- LEDs provide a visual indication of the status of each tank compartment.
- Stainless-steel contact pins.
- Meets API recommended practice.
- Audible and visible alarms.
- Connect up to 6 overfill sensors.
- Durable housing.
- Certification: ExialIBT4 Ga



Model: S02L

Features & Benefits

- Stainless-steel contact pins.
- Connects up to 6 Overfill Sensors.
- Meets API Recommended Practice.
- Durable Housing.





Retractable Grounding Reel for Floating Roof Storage Tanks ➤

Risk Management for Floating Roof Storage Tanks

Model: RGR

The "Retractable Grounding Reel" (RGR for short) is designed to discharge the static electricity of floating roof storage tanks. It is used as the equipotential bonding between the floating roof and tank shell. The lightning current and bound charge will be effectively and rapidly dissipated to earth upon a lightning strike. Compared with the conventional bypass conductor, it will effectively decrease the possibility of a lightning-induced fire, and make it more reliable and safe.



CE Ex II 2GT5

➤ Features & Benefits

- 316L stainless steels housing for corrosion resistance.
- Pre-Tensioned: The RGR is pretensioned at the factory, so no on-site tensioning is required.
- Overall mirror polishing, more beautiful, better corrosion resistance.
- Braided strip outer stainless steel braiding protection, better tensile resistance.
- China Patent No.: ZL 2016 2 1012793.X
- Applicable Directive: 2014/34/EU

Materials

| | |
|--------------|--|
| Housing | 316L stainless steel |
| Axle Sleeve | H62 brass |
| Spring | Spring steel |
| Cable | Double braided cable 2880/34 Tinned braided copper cable (Inside layer) Braided 304 SS cable (Outside layer) Cross-sectional area 50mm ² |
| Cable Length | 20m (24.4m is available) |

Weight & Dimensions

| | |
|-----------------------|-----------------------|
| Net Weight | 27.1 kg |
| Shipping Plywood Case | 8.0 kg |
| Total Weight | 39.6 kg |
| Overall Dimensions | 51*46*35 cm |
| Other Parts | 316 L stainless steel |

| Tank Circumference, meters | Tank Diameter, meters | Quantity of Required RGR's |
|----------------------------|-----------------------|----------------------------|
| ≤ 60 | ≤ 19.10 | 2 |
| ≤ 90 | ≤ 28.65 | 3 |
| ≤ 120 | ≤ 38.20 | 4 |
| ≤ 150 | ≤ 47.75 | 5 |
| ≤ 180 | ≤ 57.30 | 6 |
| ≤ 210 | ≤ 66.84 | 7 |
| ≤ 240 | ≤ 76.39 | 8 |
| ≤ 270 | ≤ 85.94 | 9 |
| ≤ 300 | ≤ 95.49 | 10 |
| ≤ 330 | ≤ 105.04 | 11 |
| ≤ 360 | ≤ 114.59 | 12 |
| ≤ 390 | ≤ 124.14 | 13 |
| ≤ 420 | ≤ 133.69 | 14 |
| ≤ 450 | ≤ 143.24 | 15 |
| ≤ 480 | ≤ 152.79 | 16 |
| ≤ 510 | ≤ 162.34 | 17 |
| ≤ 540 | ≤ 171.89 | 18 |
| ≤ 570 | ≤ 181.44 | 19 |
| ≤ 600 | ≤ 190.99 | 20 |



➤ Reference

API Recommended Practice 545 First Edition, October 2009

Item 4.2.1.2.2 Number, Length and Electrical Resistance

The tank floating roof shall be bonded to the tank shell by direct electrical connection through an appropriate number of bypass conductors. Each conductor, including connections, shall have a maximum end-to-end electrical resistance of 0.03Ω. The bypass conductors shall be of the minimum length necessary to permit full movement of the floating roof. Bypass conductors should be evenly spaced not more than every 30 m (100 ft) around the tank circumference with a minimum of two.

Sister Companies ➤



Density Meter

The portable density meter DSM-PN-03 is designed for density and temperature measurements of any pure liquids directly in tanks, without sampling, at the depth up to 30 meters.

➤ Advantages

- Density accuracy: $\pm 0.0003 \text{g/cm}^3$
- Temperature accuracy: 0.1°C
- No sampling required
- Direct density measurement
- Automatic temperature compensation
- Local results storage and wireless data transfer
- At any depths up to 30 meters



Magnetic Price Signs

They are designed to show the prices at the gas stations. It is patented in the US.

➤ Advantages

- Energy saving
- Economical and easy to operate
- Safe operation, low maintenance
- Excellent visibility in the day time and night time

Filters

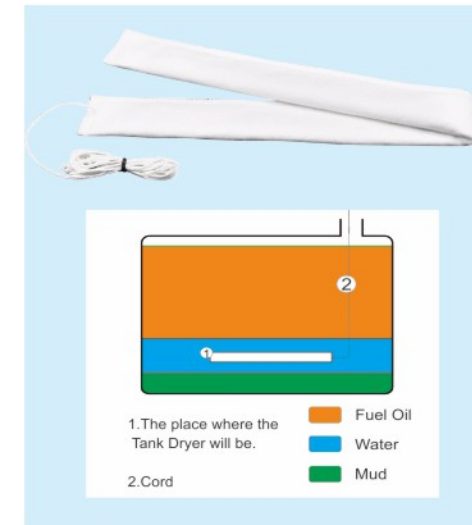
Water particle removal fuel dispenser filter elements are designed for commercial fuelling dispensers in gasoline or diesel service stations.

➤ Application

- Particulate filtration
- Monitors water
- For use with diesel, gasoline, and ethanol or methanol blends up to 10%

➤ Advantages

- Monitors water content of storage tank
- Removes particulate contaminants such as dirt, dust and rust
- Added protection to gasoline dispenser meter chambers



Tank Dryer

Check for water in your tanks (storage tanks, above ground tanks and underground tanks etc.). Absorbs water out of diesel, biodiesel and fuel oil.

➤ Application

- Sizes: 60cmX4.5cm can hold 300ml water (Other sizes are available)
- Easy to install
- Improving oil quality

Qingdao Autodisplay Co., Ltd.

Product: Price sign for gas station
www.autodisp.com

Qingdao AOBO-environment Technology Co.,Ltd.

Product: Filters for fuel dispenser
www.aobo-e.com

Qingdao Aubon Instrument Co., Ltd.

Product: Level gauges for tanks
www.aubon.net

Qingdao Add Value Flow Metering Co., Ltd.

Product: Flow meter
www.addvalue.com.cn

Qingdao Allred Electronics Co.,Ltd.

Product: Infrared combustible gas alarm
www.qdallred.com

Qingdao Augreener Electronic Technology Co., Ltd

Product: Battery-free wireless doorbell
www.augreener.com