

TWO-PIECES ALUMINIUM SWIVEL

Series 0853-0858-0876-0878

Technical specifications



Liquid Transfer Srl

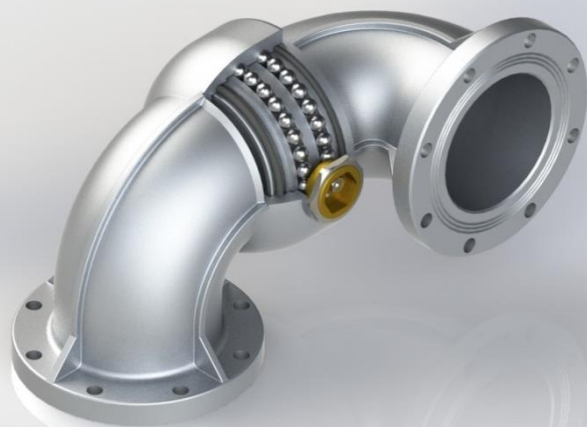
DOC: 0858_01_EN REV: 01-09/2017



The aluminium swivels serie 08XX are generally used to assemble loading arms, floating suctions, drainage for floating roof and skimmers. They have a double ball race and different kind of seals depending on the liquid they will be used with. They can also be supplied in different configurations.

Technical features

Series	0853	0876	0858		0878	
Nominal diameter	4''		From 3'' to 6''	From 8'' to 16''	from 3'' to 6''	from 8'' to 28''
Design pressure	10 Bar			3 Bar		
Test pressure	15 Bar			5 Bar		
Design temperature	-25°C / +65°C					
Flanges	TTMA			PN10	ANSI150/TTMA	ANSI150/PN10
Seals material	Fluoroelastomer FPM-NT (Viton®)					



Series 0858 and 0878 composed by a male and a female with flanged curves

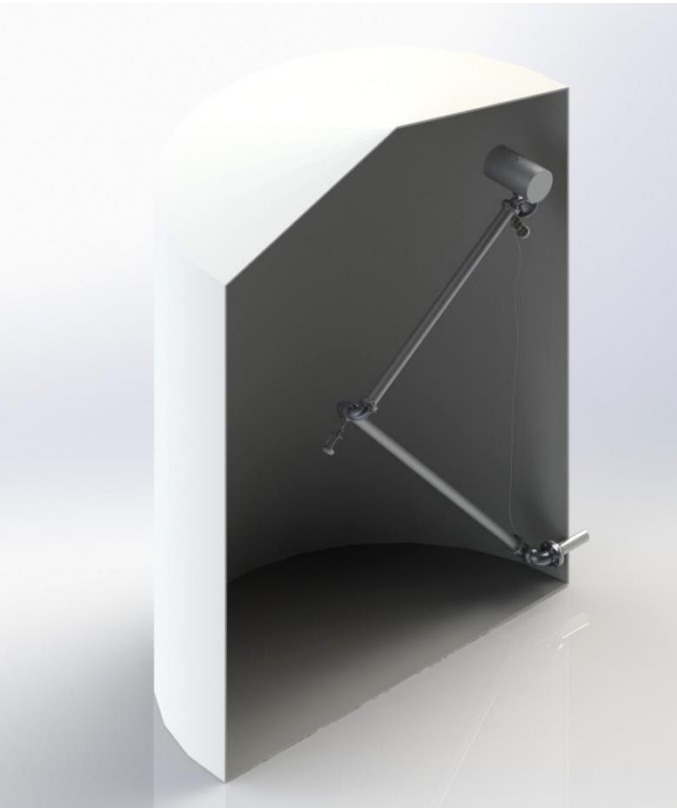
Standards and Regulations

- Conformity Declaration of current Directive **PED** for Pressure Equipment
- Conformity Declaration of current Directive **ATEX** for Equipment used in Potentially explosive atmospheres
- Customs Declaration of certification for Russia, Kazakhstan, Belarus, **EAC certification**.
- Standard **API-ASTM-ANSI-TTMA**.

Options

Seals material	Main applications	Working temperature
HNBR NBR hydrogenated	Bio fuels	-40/+65 °C
PTFE Teflon	Aggressive fluids	-45/+65 °C
FVMQ Fluorosilicone	Food fluids	-60/+65 °C

Other configurations are available upon request.



EXAMPLE: *Series 1505 floating suction.*

Standard documentation

- Declaration of conformity to regulations
- Declaration of material conformities and functional test (CCC)
- Manual of use and maintenance (MUM)

Documentation on request

- **Materials specifications map (MIM):**
 - Certification 2.2 EN 10204 for aluminium



Series 0853 assembled with a male flanged curve and a female with strait part, to compose **Series 0876**.



Series 0876 complete with a socket and a handle to facilitate handling; generally used on bottom loading arms with an API RF 1004 coupler.