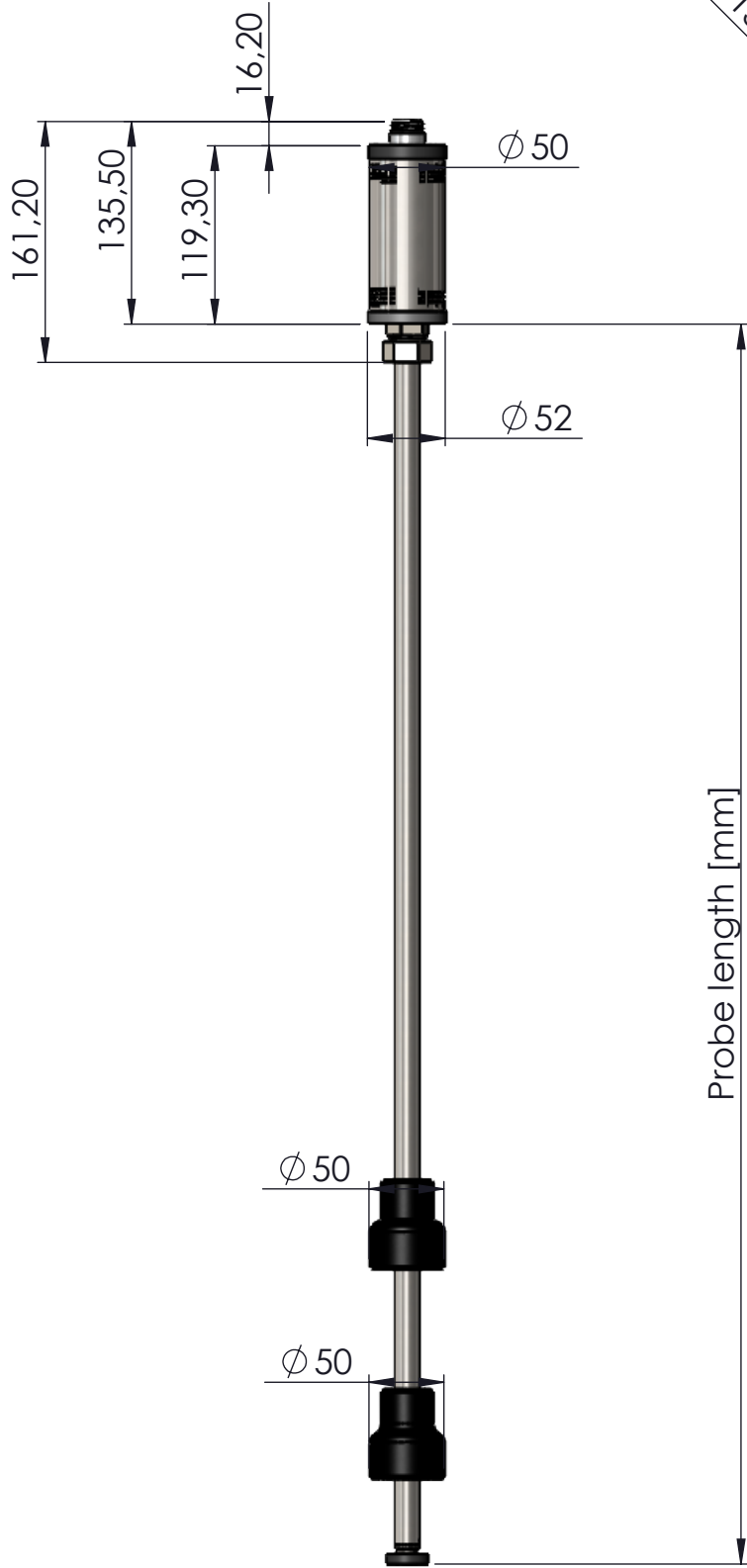
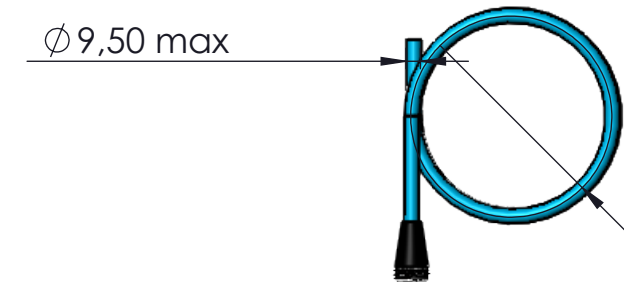


PROBE XMT-SI-485 7/8

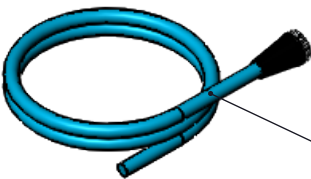
REVISIONS				
REV	DATE	DESCRIPTION	ECO	ENG
-	-----	----	---	--/--




$\phi 133 \text{ min}$

Bending Radius  $> 7 \cdot D$

D= 9.50mm MAX



CONNECTION CABLE 1.5m (STANDARD)  
CONNECTION CABLE 6m (OPTIONAL)

<div>DOVER FUELING SOLUTIONS CONFIDENTIAL INFORMATION, SUBJECT TO NDA. THE DRAWINGS, TECHNICAL DATA, AND ALL OTHER INFORMATION SET FORTH IN THIS DOCUMENT COMPRISE TRADE SECRETS AND/OR OTHER CONFIDENTIAL INFORMATION THAT IS THE PROPERTY OF DOVER FUELING SOLUTIONS, UK LTD. AND/OR ITS AFFILIATE(S) AND MAY BE SUBJECT TO COPYRIGHT OR OTHER PROTECTION. ACCESS TO AND/OR USE OF SUCH CONFIDENTIAL INFORMATION IS STRICTLY CONTROLLED AND LIMITED TO THE PURPOSE(S) FOR WHICH IT IS OR WAS PROVIDED, AND NO RECIPIENT IS PERMITTED TO USE, COPY, OR OTHERWISE DISCLOSE OR TRANSMIT SUCH INFORMATION, EXCEPT AS EXPRESSLY SET FORTH IN THE APPLICABLE NON-DISCLOSURE AGREEMENT(S), OR AS OTHERWISE AUTHORIZED IN WRITING BY, OR ON BEHALF OF, DOVER FUELING SOLUTIONS UK LTD. AND/OR ITS AFFILIATES. ALL RIGHTS RESERVED.</div> <div>PROPRIETARY AND CONFIDENTIAL</div> <div>THE INFORMATION CONTAINED IN THIS DRAWING IS THE SOLE PROPERTY OF DFS.</div> <div>ANY REPRODUCTION IN PART OR AS A WHOLE WITHOUT THE WRITTEN PERMISSION OF DFS IS PROHIBITED.</div>	UNLESS OTHERWISE SPECIFIED:		NAME	DATE	TITLE: Probe XMT-SI-485 7/8 Dimensions		
	DIMENSIONS ARE IN MILLIMETERS		DRAWN	Riboldi	27/03/19		
	TOLERANCES: 0.0 ±0.05		CHECKED	--	--		
			ENGINEER	--	--		
			APPROVAL	Caligaris	27/03/19	PART NO. -- ----	
		COMMENTS:			REV --		
MATERIAL --				<div>DRAWING NO. 2-XSI2000GJK-D1R0</div> <div>SHEET 1 OF 1</div>			
FINISH --							
DO NOT SCALE DRAWING							