

LPG DRY-BREAK AWAY EMERGENCY VALVE

Serie ERC50 – ERC80

Technical specifications



Liquid Transfer Srl

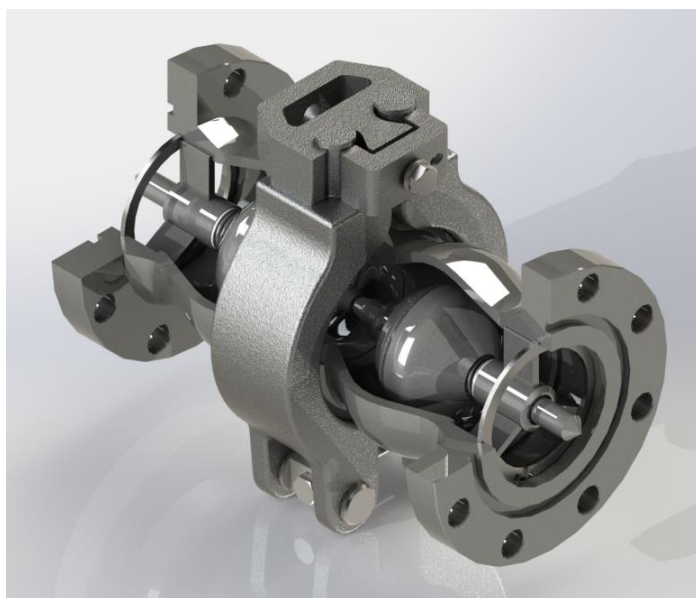
DOC: ERC50-80_01_EN REV: 01-09/2017



The Silea series ERC (DN50-DN80) dry-break away emergency valve is used on LPG loading arms to avoid leakages of liquids or vapours in case of accidental departure of the truck during loading. The ERC is actuated by a steel cable that limits the opening of the loading arm, so the working area. In case the arm exceeds this range, the cable pulls a bolt that releases a pair of clamps. Without any restraint the valve splits in two parts without any leak.

Technical features

Nominal diameter/ Coupling	Flange F Dn50 Flange Dn80
Body material	AISI 316L
Seals material	NBR (Buna)
Design pressure	40 bar
Test pressure	60 bar
Screw break load	200 - 400 kg
Max non-influential load on the valve	150 kg
Design temperature	-40°C / +65°C



Standards and Regulations

- Conformity Declaration of current Directive **PED** for Pressure Equipment
- Conformity Declaration of current Directive **ATEX** for Equipment used in Potentially explosive atmospheres
- Customs Declaration of certification for Russia, Kazakhstan, Belarus, **EAC certification**.
- Standard **API-ASTM-ANSI-TTMA**.

Options:

Seals material	Main applications	Working temperatures
PTFE Teflon	Aggressive fluids	-60°/+230°C
EPDM Ethylene-propylene- diene	Chemical fluids	-40°/+65 °C

Accessories:

- **Activating cable with gas spring**

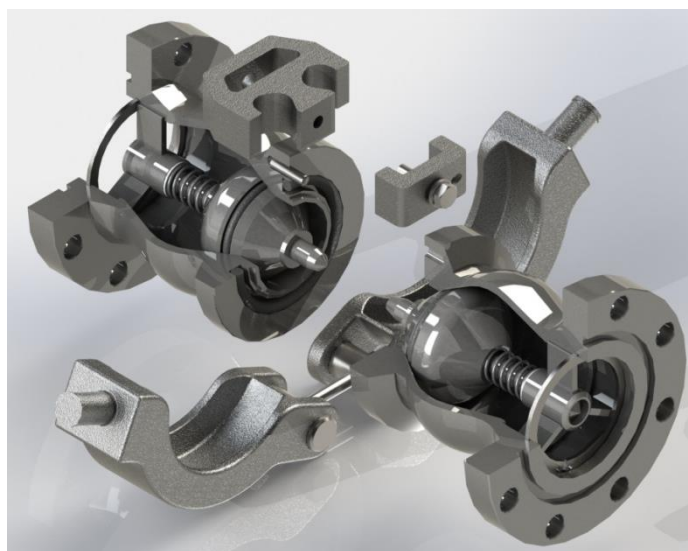


Standard documentation

- Declaration of conformity
- Declaration of material conformity and functional test (CCC)
- Use and maintenance (MUM) Manual

Documentation upon request

- **Materials specifications map (MIM):**
 - Certification 3.1 EN 10204 for steel
 - Certification 2.2 EN 10204 for aluminium



A broken ERC valve.